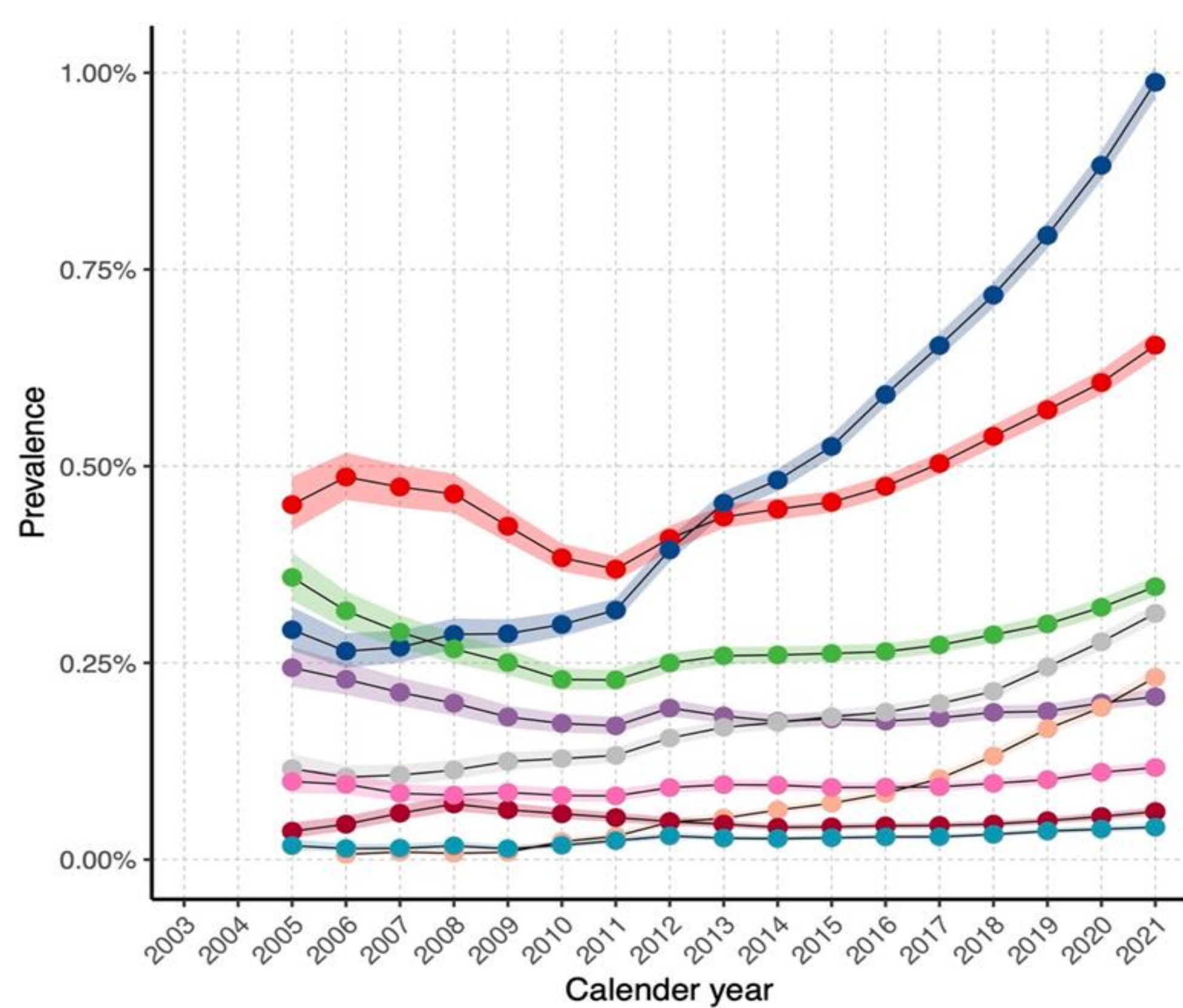


We observed 4,294,640 person counts during the 18-year observation period. The highest incidences were observed in the 60- 69-year-old cohort for pancreas, esophagus, and colorectal cancers and the 50-59-year-old cohort for breast, head and neck, and liver cancers.

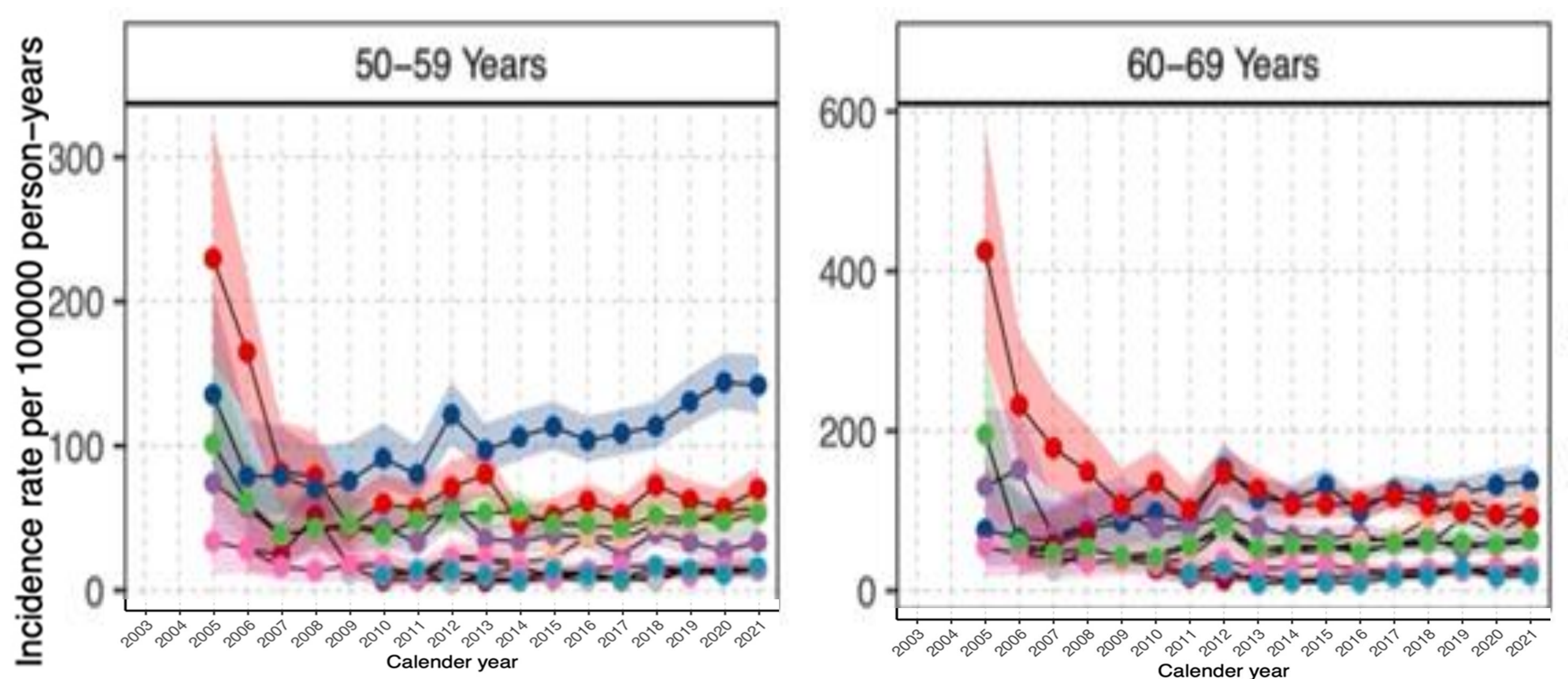
Oncology Incidence and Prevalence Trends 2003-2021 within the TMUCRD using OHDSI-validated OMOP CMD Standards

Purpose: Leveraging an OHDSI-supported and validated OMOP CDM standard, this study describes secular trends in the incidence and prevalence of specific cancers from a multisite Taiwanese medical system from 2003 to 2021.

Result 1: Increased prevalence of all cancers



Result 2: Stratification of incidence rate across two age cohorts



Methods

- Cancers: **breast**, **colorectal**, **esophagus**, **head and neck**, **liver**, **lung**, **pancreas**, prostate, and **stomach**
- Taipei Medical University Clinical Research Database (TMUCRD) adopted a validated OMOP CDM standard, TMU-CMD (v5.3.1), containing information on over 4.2 million patients
- Criteria:
 - Inclusion: Adult patient records with a specified cancer diagnosis for at least one year
 - Exclusion: Missing information on age and sex or records with diagnostic codes for non-malignant cancer, metastasis (sans from prevalence analyses), sarcoma, lymphoma, and other tumors
- Observation period: 1/1/2003 to 31/12/2021, with stratification by each calendar year and 5-year groupings
- Further stratification by age and sex was completed during the prevalence and incidence rates analyses.
- Incidence rates used 95% CI, including rates per 100,00 person-years, events observed, and time of risk.
- Low disease occurrences observed, 5 times or less, were documented as <5 for confidentiality
- Packages: IncidencePrevalence and R package

Limitation: Though extensive, using only the TMUCRD limits the generalizability of our findings and limits implications to the TMU medical system (i.e., informed decisions with personnel, equipment, and access flow). #PICKMETOJOIN #COLLABORATIONWELCOME #SCANFORMORE



Phan Thanh Phuc^{*}₁, Whitney Burton^{*}₁, Phung-Anh Nguyen^{1,2,3}, & Jason C. Hsu^{1,2,3}

1. International Ph.D. Program in Biotech and Healthcare Management, College of Management, Taipei Medical University, Taipei City, Taiwan

2. Clinical Data Center, Office of Data Science, Taipei Medical University, Taipei City, Taiwan

3. Clinical Big Data Research Center, Taipei Medical University Hospital, Taipei Medical University, Taipei City, Taiwan