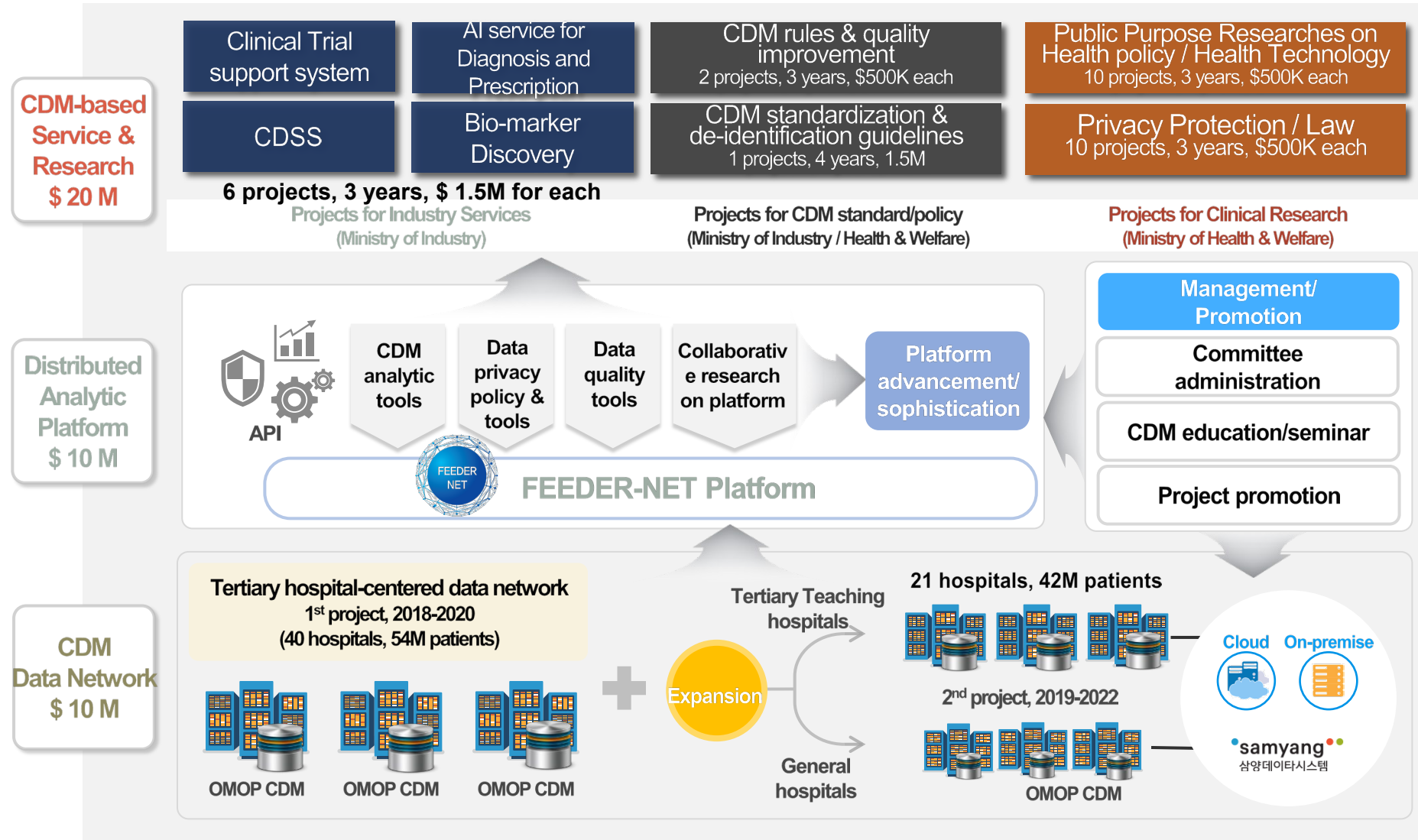


# **OHDSI Korea Update**

**Park, Rae Woong, MD, PhD**

**Dept. of Biomedical Informatics, Ajou University School of Medicine,  
South Korea**

# National CDM Projects in Korea 2018-2022



**FEEDER-NET: Federated E-health big Data for Evidence Renovation NETWORK**

# Data Governance Leadership Meeting

- A total of **21 Leadership Meetings** have been held since 2017 - 2022
- At this meeting, **ethical, technical, privacy, conflicts, governance issues** were discussed to establish CDM network and promote collaborative research



고대인암병원 2017.11.09



고대구로병원 2018.01.25



아주대학교병원 2018.03.29



주세브란스기독병원 2018.06.28



부산대병원 2018.08.31



전북대병원 2018.11.22



아주대학교병원 2019.01.31



국민건강보험 일산병원 2019.03.27



아주대학교병원 2019.05.30



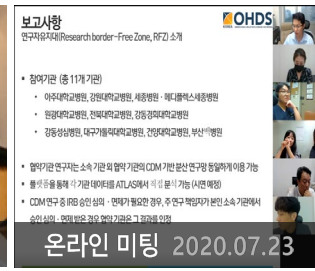
분당서울대병원 2019.07.25



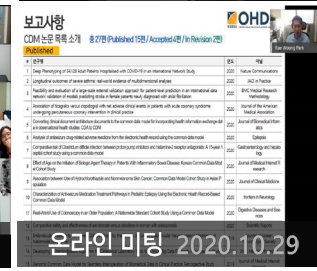
삼성서울병원 2019.09.26



곤지암리조트 2019.12.12



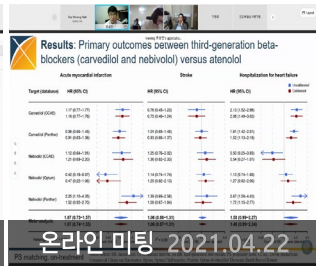
온라인 미팅 2020.07.23



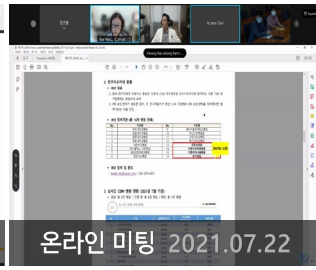
온라인 미팅 2020.10.29



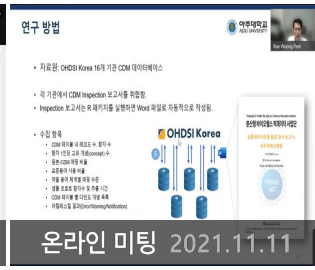
온라인 미팅 2021.01.21



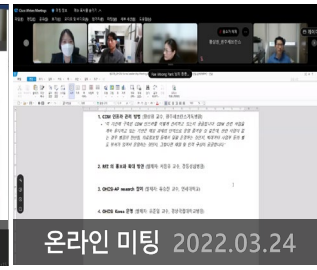
온라인 미팅 2021.04.22



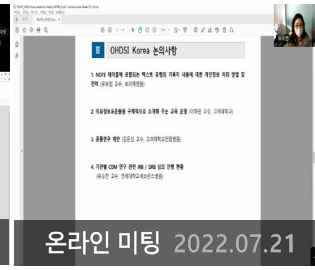
온라인 미팅 2021.07.22



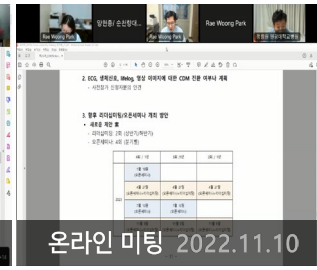
온라인 미팅 2021.11.11



온라인 미팅 2022.03.24



온라인 미팅 2022.07.21



온라인 미팅 2022.11.10



## DB Engineer Meeting

- Biweekly, TC
- EHR engineers from participating hospitals
- Discuss all the technical issues during CDM conversion

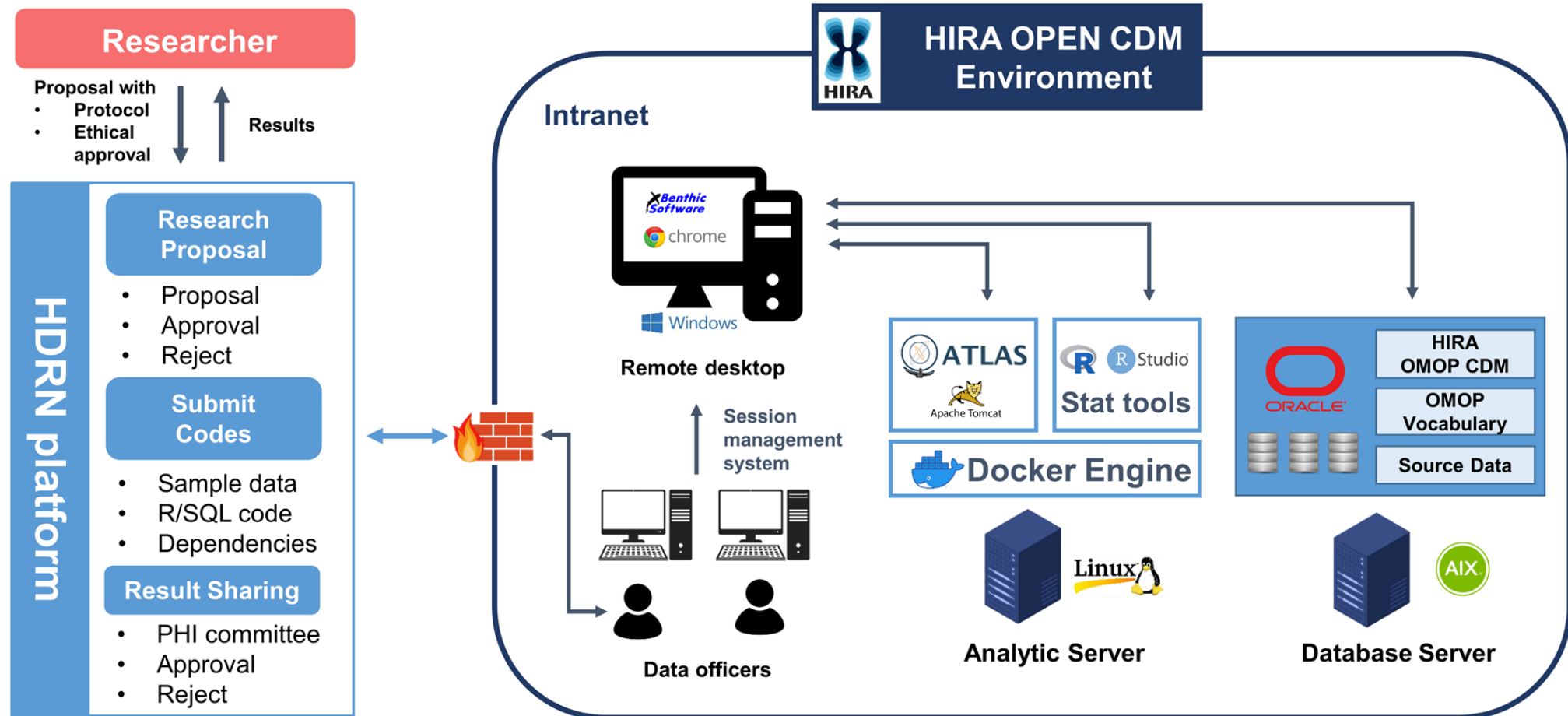


## Open Forum

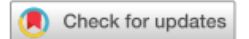
- Monthly, 1-3 hour lecture
- Agenda
  - Introduction to OHDSI and CDM
  - OMOP CDM Structure
  - OMOP CDM Vocabulary/ vocabulary mapping
  - Tools for OMOP CDM
  - ETL process
  - Research Experience using OHDSI Network

# Health Insurance Review Agency (HIRA) CDM

Health Claim data for whole persons in Korea into CDM (>50M)



Researches > 2,396

OPEN  
ARTICLE

# Scalable Infrastructure Supporting Reproducible Nationwide Healthcare Data Analysis toward FAIR Stewardship

Ji-Woo Kim<sup>1,7</sup>, Chungsoo Kim<sup>2,7</sup>, Kyoung-Hoon Kim<sup>3</sup>, Yujin Lee<sup>3</sup>, Dong Han Yu<sup>1</sup>, Jeongwon Yun<sup>1</sup>, Hyeran Baek<sup>1</sup>, Rae Woong Park<sup>2,4,8</sup> & Seng Chan You<sup>5,6,8</sup>

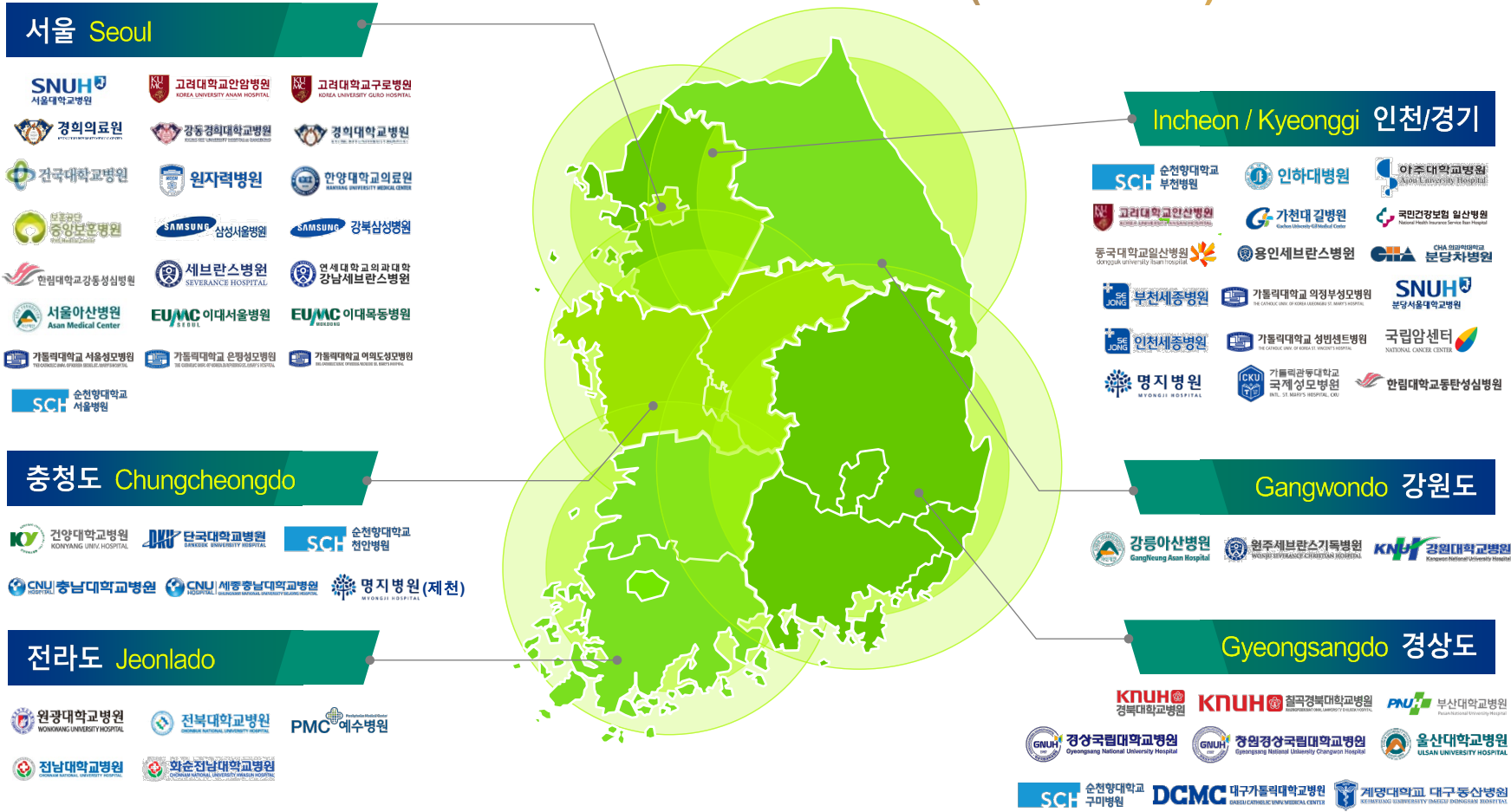
Transparent and FAIR disclosure of meta-information about healthcare data and infrastructure is essential but has not been well publicized. In this paper, we provide a transparent disclosure of the process of standardizing a common data model and developing a national data infrastructure using national claims data. We established an Observational Medical Outcome Partnership (OMOP) common data model database for national claims data of the Health Insurance Review and Assessment Service of South Korea. To introduce a data openness policy, we built a distributed data analysis environment and released metadata based on the FAIR principle. A total of 10,098,730,241 claims and 56,579,726 patients' data were converted as OMOP common data model. We also built an analytics environment for distributed research and made the metadata publicly available. Disclosure of this infrastructure to researchers will help to eliminate information inequality and contribute to the generation of high-quality medical evidence.

# The process of constructing HIRA CDM

# CDM Data Network in Korea

Data Network of **>75 Hospitals, 3 National Claims**

- 80% of Tertiary Teaching Hospitals
- National claim data (2010-2022) of All Korean





HOME

Dashboard

Network

RESEARCH

Project

ATLAS

Search

New

SUPPORT

Resources

Announcement

Forum

Evidnet

ADMIN

OrgAdmin

아주대학교병원

Total Patients

70,277,551



Research Execution

51,360



Integrated Organizations

48



Data Conversions

52



즐거찾기

전체

소속

협력

RFZ

Open-DB

Atlas Version

2.7.6

Keyword Search



부산대학교병원

PNUH\_5.3.0\_02

RFZ:



Patients:

1,753,001

OMOP CDM:

v5.3.0

Period:

2011/02 ~ 2019/08

Running Execution:

0

Waiting Execution:

0



강동성심병원

KDH\_5.3.1\_monthly

RFZ:



Patients:

1,209,068

OMOP CDM:

v5.3.0

Period:

1986/11 ~ Monthly Update

Running Execution:

0

Waiting Execution:

0



이화의료원(목동,서울)

EUMC\_5.3.1\_weekly

RFZ:



Patients:

1,816,808

OMOP CDM:

v5.3.0

Period:

2001/01 ~ Weekly Update

Running Execution:

0

Waiting Execution:

0



경북대학교병원 본원/칠곡

KBNUH\_5.3.1\_weekly

RFZ:

해당 없음

Patients:

1,451,641

OMOP CDM:

v5.3.1

Period:

2006/01 ~ Weekly Update

Running Execution:

0

Waiting Execution:

0



# 04 Research border-Free Zone: RFZ

Promote collaborative researches b/n hospitals and academia by using data from multiple hospitals

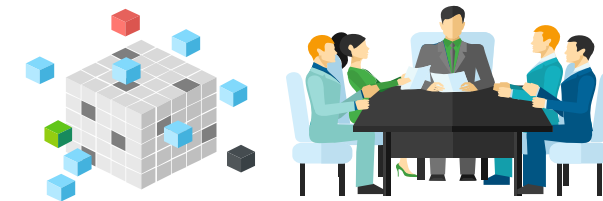
Act1: Reciprocal Unlimited Access

Act2: Single IRB

34 hospitals joined

## CDM RFZ MOU

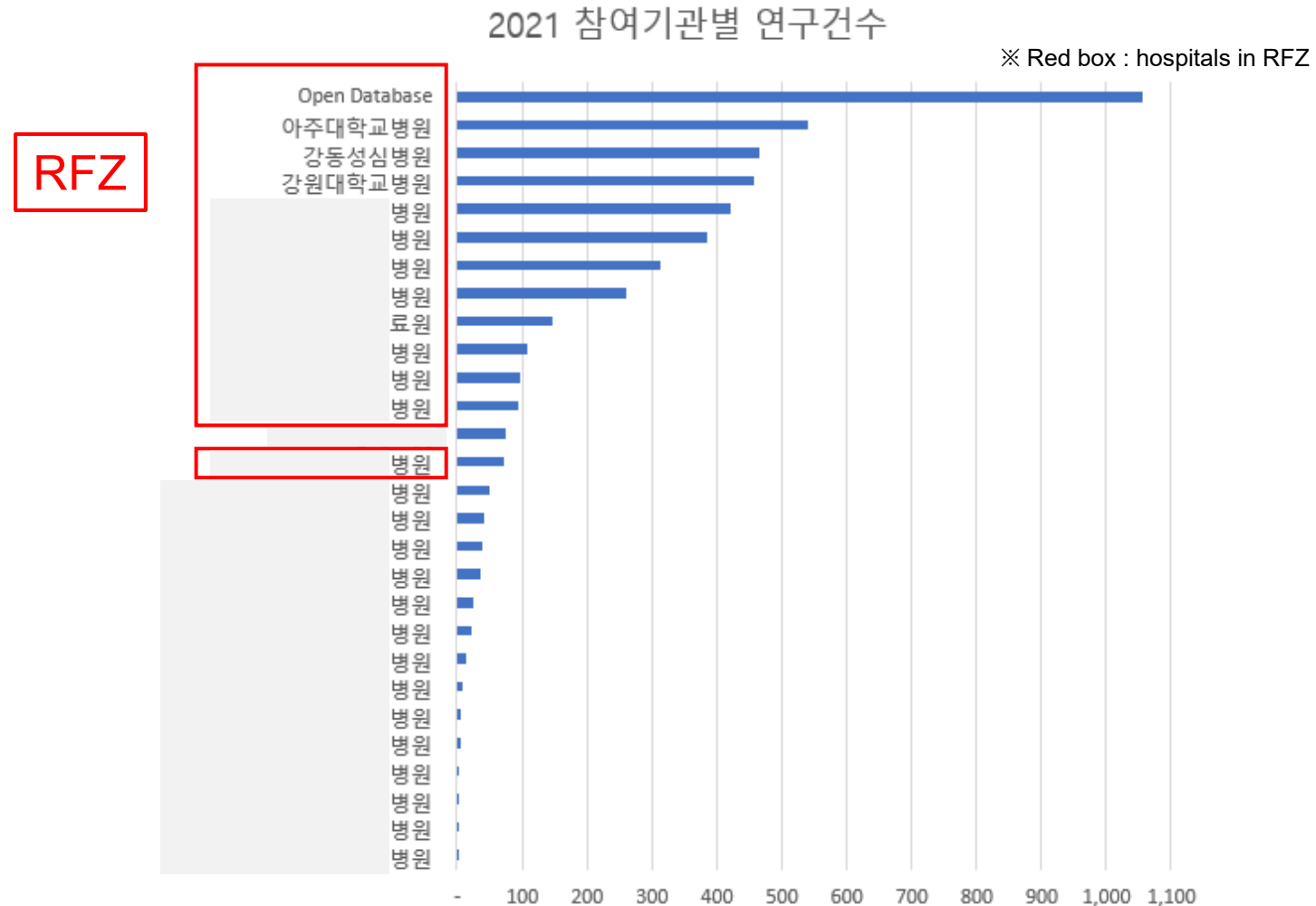
Korea, Dec 13, 2019



# Effects of RFZ: CDM usage between RFZ and non-RFZ

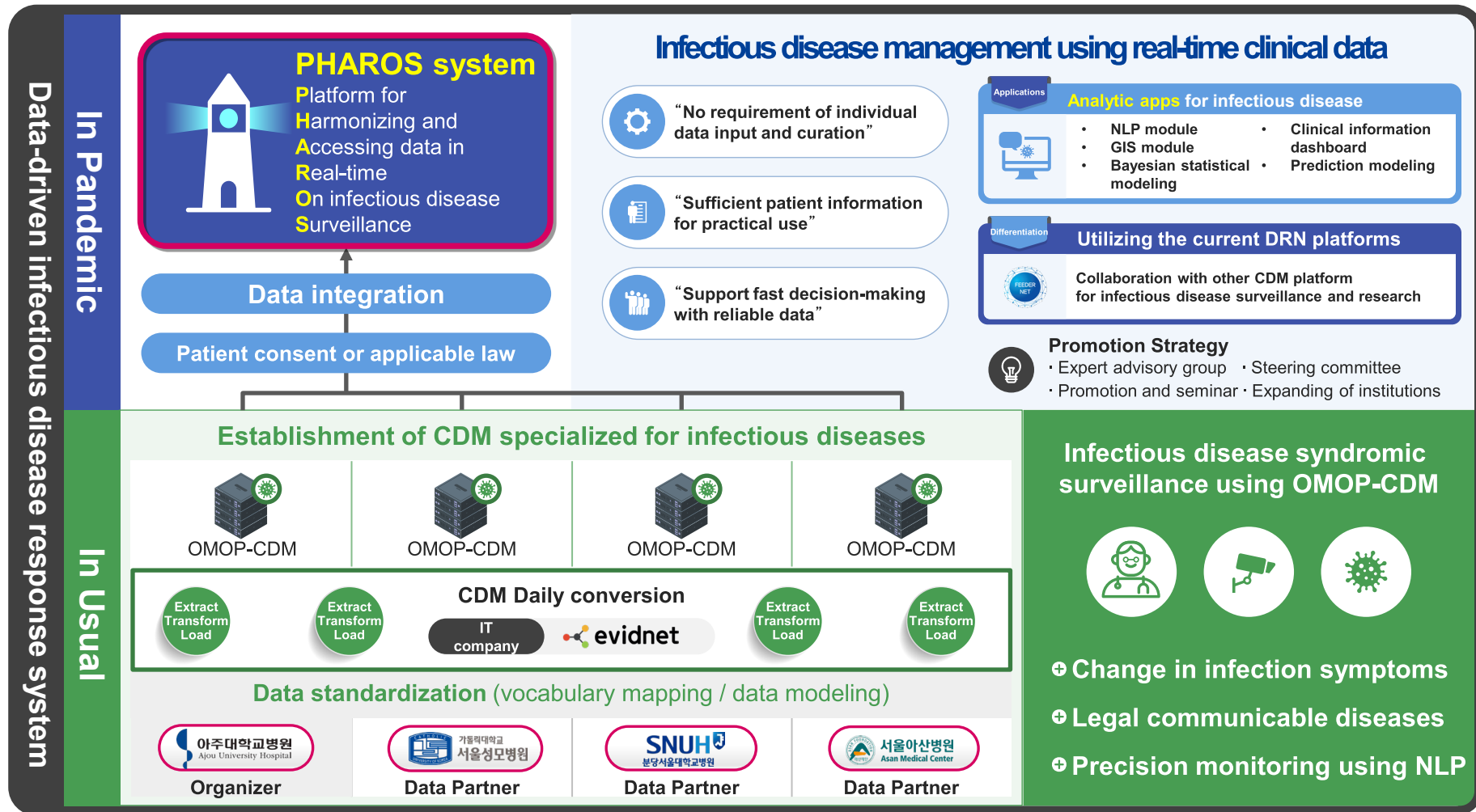
## Counts of analyses using the FeederNet

- Hospitals in the RFZ shows high CDM-based analysis activity.

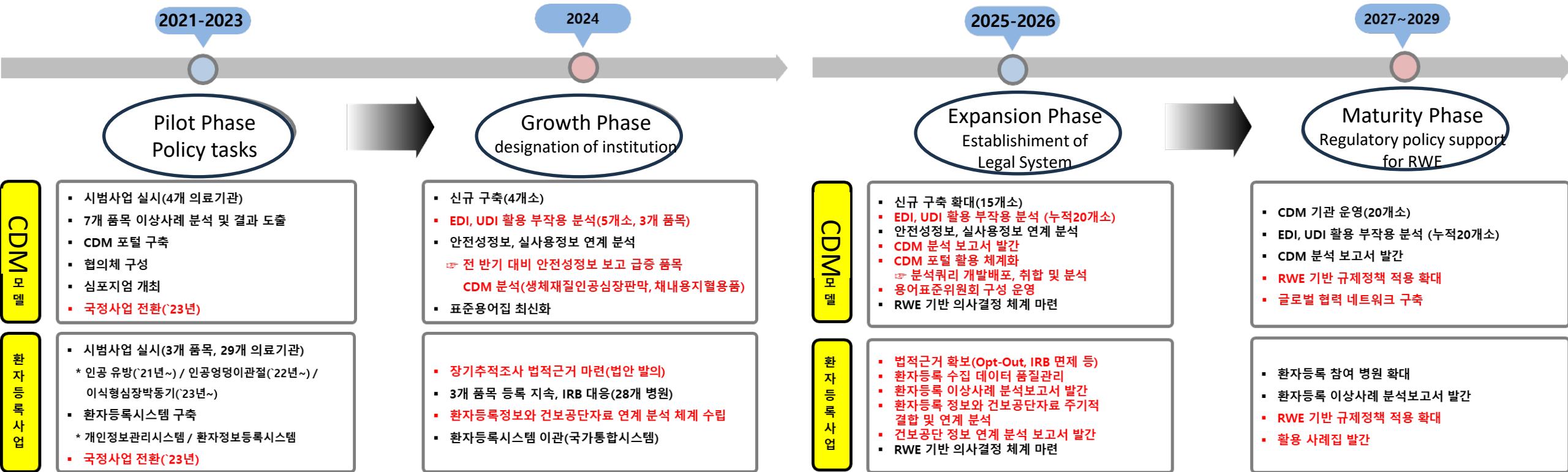


# PHAROS - Integrated infectious disease clinical information management system using real-time OMOP-CDM

**PHAROS** Platform for Harmonizing and Accessing data in Real-time On infectious disease Surveillance



# RoadMap for National Medical Device Surveillance System based on OMOP-CDM (KFDA)



# Key takeaway messages



Strong government support is critical



Building trust and data governance among data partners



Establishment of open data consortiums (e.g., RFZ)



CDM can act as infrastructure for public-private health systems (e.g., real-time surveillance)