



Application of LLMs in the Evidence Generation Process

OHDSI Community Call
June 18, 2024 • 11 am ET



Upcoming Community Calls

Date	Topic
June 25	Recent OHDSI Publications
July 2	Newcomer Introductions
July 9	Building The OHDSI Evidence Network Sprint
July 16	HowOften Initiative & Early Results
July 23	Building The OHDSI Evidence Network Sprint
July 30	Advances in Patient-Level Prediction
Aug. 6	Building The OHDSI Evidence Network Sprint
Aug. 13	Global Symposium Tutorials
Aug. 20	Building The OHDSI Evidence Network Sprint
Aug. 27	canceled due to ISPE 2024
Sept. 3	New Standardized Vocabularies Release



June 25: Recent OHDSI Publications



Nhung Trinh

Researcher, University of Oslo

Effectiveness of COVID-19 vaccines to prevent long COVID: data from Norway • *The Lancet Respiratory Medicine*



Theresa Burkard

Postdoctoral Data Scientist, University of Oxford

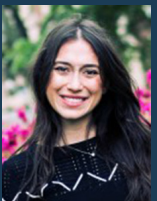
Calculating daily dose in the Observational Medical Outcomes Partnership Common Data Model • *Pharmacoepidemiology & Drug Safety*



Egill Fridgeirsson

Scientific Researcher, Erasmus MC

Comparing penalization methods for linear models on large observational health data • *JAMIA*



Kayla Schiffer

PhD Student, Columbia University

Converting OMOP CDM to phenopackets: A model alignment and patient data representation evaluation • *Journal of Biomedical Informatics*



Cindy Cai

Assistant Professor of Ophthalmology, Johns Hopkins University

Similar Risk of Kidney Failure among Patients with Blinding Diseases Who Receive Ranibizumab, Aflibercept, and Bevacizumab: An Observational Health Data Sciences and Informatics Network Study • *Ophthalmology Retina*



Three Stages of The Journey

Where Have We Been?

Where Are We Now?

Where Are We Going?





Upcoming Workgroup Calls



Date	Time (ET)	Meeting
Tuesday	1 pm	Common Data Model
Wednesday	1 pm	Perinatal & Reproductive Health
Wednesday	4 pm	Joint Vulcan/OHDSI meeting
Thursday	8 am	OHDSI India Community Call
Thursday	9 am	OMOP CDM Oncology Vocabulary/Development Subgroup
Thursday	9:30 am	Themis
Thursday	12 pm	HADES
Thursday	7 pm	Dentistry
Friday	10:30 am	Open-Source Community
Friday	11:30 am	Clinical Trials
Friday	11:30 am	Steering Group
Monday	10 am	CDM Survey Subgroup
Monday	10 am	Africa Chapter
Tuesday	9 am	OMOP CDM Genomic Subgroup



#OHDSI2024 Collaborator Showcase

The deadline to submit your brief report for the 2021 Global Symposium Collaborator Showcase is 8 pm ET on June 21.



ohdsi.org/2024-ohdsi-symposium-collaborator-showcase



#OHDSI2024 Collaborator Showcase

OHDSI

The screenshot shows the OHDSI website navigation menu. The '2024 Collaborator Showcase Submission Form' link is circled in orange. Below the navigation menu, the page content includes a 'Welcome to OHDSI' section and a '2024 Global Symposium' section. A button labeled '2024 Global Symposium Homepage' is visible at the bottom of the page content.

2024 OHDSI Collaborator Showcase Brief Report Submission Form- Posters, Oral Talks and Software Demonstrations

Thank you for your interest in the 2024 OHDSI Collaborators Showcase! We are delighted that you are interested in showcasing your work at this year's symposium showcase, which will take place at the Hyatt Regency Hotel in New Brunswick, New Jersey, USA, October 22-24, 2024.

The deadline to submit your brief report is **Friday, June 21 at 8:00pmET**.

By filling out this form you may choose if you would like to present your work as a poster, an oral talk or a software demonstration (or all three). If a poster or software demo, you will present it during the Collaborator Showcase at the symposium. If an Oral talk, you will present an estimated 7-minute talk at the symposium. Although we strive to accommodate your requested presentation format, it is not guaranteed. If the review committee has selected your work to be presented at this year's showcase, you will be notified via email by Tuesday, August 20, 2024, and the presentation format will be confirmed at that time.

Topics should align with at least one of OHDSI's strategic areas of focus:

- Observational data standards and management
- Open-source analytics development
- Methodological research
- Clinical applications

SUBMISSION INSTRUCTIONS:

A brief report submission template can be found by using the below link: https://docs.google.com/document/d/1GADPitvH1eHXH_W9qB0lg-nv2gAVnloH2c7kCqtWGqk/edit?usp=sharing

The document can be downloaded as a Microsoft Word document by clicking on the link and selecting File->Download As...-> Microsoft Word (.docx).

Each presenting author should upload their document as a PDF. The submission should meet the following guidelines:

ohdsi.org/OHDSI2024



OHDSI Evidence Network



5 Rationale and Background

The Observational Health Data Sciences and Informatics (OHDSI) federated network is a collaborative effort aimed at leveraging healthcare data from multiple institutions for large-scale federated observational research. In its current state there are over 500 data sources from over 49 countries mapped to the OMOP Common Data Model, the standard that enables such ambitious evidence generation. One major challenge of federated network studies is the assessment of network data quality, study feasibility and data fitness-for-use across these data sources in such a way that does not strain the time and resources of data holders while still supporting rigorous evidence generation that engenders trust and buy-in from the larger research community.

To facilitate collaborative research efforts and ensure the quality and integrity of the data across the OHDSI network, it is imperative to understand the characteristics and variability of the databases within the network. This study aims to collect summary statistics from participating sites to describe the databases and learn about the network as a whole. The output of the study will inform and enhance the research capabilities of the OHDSI community by enabling rapid data quality and fitness-for-use assessments.

5.1 Research Questions

The main research question of this study is:

What are the population-level characteristics of the databases within the OHDSI federated network?



Please fill out a short google form to indicate your intent to join the study



Next CBER Best Seminar: June 26

Topic: Applying Machine Learning in Distributed Networks to Support Activities for Post-Market Surveillance of Medical Products: Opportunities, Challenges, and Considerations

Presenter: Jenna Wong, Assistant Professor in the Department of Population Medicine at Harvard Medical School and Harvard Pilgrim Health Care Institute

Logistics: 11 am – 12 pm EST, Zoom webinar



ohdsi.org/cber-best-seminar-series



CBER Best Seminar Homepage

CBER BEST Seminar Series

The [CBER BEST Initiative](#) Seminar Series is designed to share and discuss recent research of relevance to ongoing and future surveillance activities of CBER regulated products, namely biologics. The series focuses on safety and effectiveness of biologics including vaccines, blood components, blood-derived products, tissues and advanced therapies. The seminars will provide information on characteristics of biologics, required infrastructure, study designs, and analytic methods utilized for pharmacovigilance and pharmacoepidemiologic studies of biologics. They will also cover information regarding potential data sources, informatics challenges and requirements, utilization of real-world data and evidence, and risk-benefit analysis for biologic products. The length of each session may vary, and the presenters will be invited from outside FDA.



Below you will find details of upcoming CBER BEST seminars, including virtual links that will be open to anybody who wishes to attend. Speakers who give their consent to be recorded will also have their presentations included on this page; you can find those sessions below the list of upcoming speakers.

Upcoming Seminars

+ June 26, 2024 (11 am) - Jenna Wong, Harvard University

+ July 17, 2024 (11 am) - Yonas Ghebremichael-Weldeselassie, Warwick Medical School

Previous Seminars

+ May 22, 2024 - George Hripcsak, Columbia University

+ April 17, 2024 - Yong Chen, University of Pennsylvania

+ Jan. 17, 2024 - Anna Ostropolets, Odysseus Data Services

+ Dec. 6, 2023 - Jenny Sun, Pfizer

ohdsi.org/cber-best-seminar-series



DIA 2024

GLOBAL ANNUAL MEETING
SAN DIEGO, CA | JUNE 16-20

60TH ANNIVERSARY

CHARTING NEW HORIZONS

OHDSI Meetup

Tuesday, June 18 6pm

Contact

Mui Van Zandt <mui@ohdsi.org>

or

Davera Gabriel <gabriel@ohdsi.org>

for details





The Center for Advanced Healthcare Research Informatics (CAHRI) at Tufts Medicine welcomes:



Charisse Madlock-Brown, PhD
*Associate Professor of Health Informatics,
University of Iowa*

‘Health Disparities Research and Electronic Health
Records: Considerations and Methods’

June 27, 2024, 11am-12pm EST

Virtually via [Zoom](#)

Please contact Marty Alvarez at malvarez2@tuftsmedicalcenter.org for calendar invite or questions.

TuftsMedicine
Tufts Medical Center



#OHDSI2024 Registration Is Open!

Registration is OPEN for the 2024 OHDSI Global Symposium, which will be held **Oct. 22-24** at the **Hyatt Regency Hotel in New Brunswick, N.J., USA.**

Tuesday: Tutorials

Wednesday: Plenary/Showcase

Thursday: Workgroup Activities

ohdsi.org/OHDSI2024





Opening: Postdoctoral Researcher, University of Oxford



UK date and time: 18-June-2024 15:41

Applicant Options

- › [New Search](#)
- › [Login](#)
- › [Job Details](#)
- › [Help](#)
- › [Terms of Use & Privacy Policy](#)

Job Details

Postdoctoral Researcher in Real World Evidence

Nuffield Department of Orthopaedics, Rheumatology and Musculoskeletal Sciences, Botnar Research Centre, Windmill Road, Oxford, OX3 7LD

We have an exciting opportunity for a Postdoctoral Researcher in Real World Evidence to join our Pharmaco- and Device epidemiology research group led by Professor Daniel Prieto-Alhambra at the Botnar Research Centre, NDORMS, University of Oxford. The NDORMS Pharmaco- and Device epidemiology research group is involved in a number of national and international studies exploring the conditions of use (adherence, compliance, off and on-label use) of a number of licensed drugs, devices, and vaccines for the prevention and treatment of human disease in 'real world' (routine practice) conditions.

As a Postdoctoral Researcher in Real World Evidence you will be leading or co-leading real world evidence studies, analysing real world health data mapped to the OMOP common data model and write study reports and scientific manuscripts. You will be responsible for development of analysis plans, protocols, ethical (and similar panel) submissions, governance and regulatory submissions as required for ongoing and future studies. You will carry out collaborative projects with colleagues in partner institutions, and research groups (both in public and private sector) and manage your own academic research.

You will hold a Doctoral (or be near completion) degree in epidemiology, biostatistics, real world evidence, health data sciences, or a related field. You will have experience in the use of R for statistical analysis together with experience of analysing real world data. Good track record of peer reviewed scientific publications, excellent team working and communication skills are also essential. Experience in the analysis and/or interpretation of OMOP-mapped data and experience designing and conducting cohort, self-controlled, and similar studies are desirable.

This is a full-time fixed-term appointment for 2 years.

The closing date for this position is 12 noon on 1 July 2024. You will be required to upload a CV and supporting statement as part of your online application.

Contact Person : HR Team, NDORMS
Contact Phone :
Pay Scale : STANDARD GRADE 7
Salary (£) : £36,024 - £44,263 p.a.

Vacancy ID : 173456
Closing Date & Time : 01-Jul-2024 12:00
Contact Email : hr@ndorms.ox.ac.uk



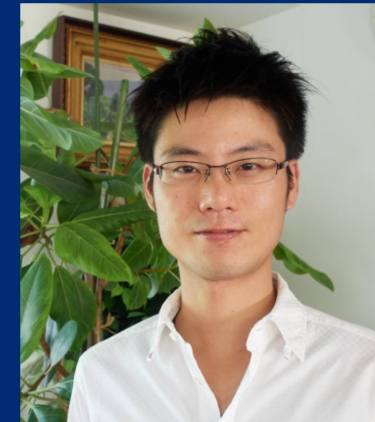
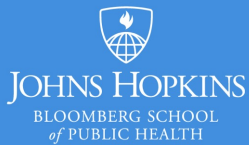
Openings: Postdoctoral Fellow, Johns Hopkins Univ.

PHARMACOEPIDEMIOLOGY POST-DOCTORAL TRAINING PROGRAM

Co-Directors: Caleb Alexander, MD, MS and Jodi Segal, MD, MPH

The **Pharmacoepidemiology Training Program** at the Johns Hopkins Bloomberg School of Public Health (BSPH) is currently **seeking to support postdoctoral fellows**. All supported trainees work with core faculty on existing or newly developed research projects on pharmacoepidemiology, so as to optimize the safe and effective use of medicines to treat heart, lung and blood diseases in the United States. |

Deadline for applications: rolling





Opening: Junior Research Software Engineer, Tufts



INFORMATICS

Research Services

COVID-19 Information and Resources

Data and Safety Monitoring Board (DSMB) Program

Center for Clinical Trials (CCT)

Program Evaluation

Qualitative and Mixed Methods Service

Clinical Trial Design Labs

Dissemination and Implementation (D&I) Core

Science Communications



“Our Informatics team can help you collect and manage research data, develop databases, and identify study participants. We’ll find the best data collection solution for your study. To get started, please submit a request below.”

William Harvey, MD, MSc, FACR
Co-Director, Informatics and Tufts Medical Center CMIO

Overview

We participate in development of a robust institutional informatics infrastructure, enabling research teams to maintain their focus on scientific discovery and analyses rather than on data wrangling. Our infrastructure and support systems are dynamic, to keep pace with the changing and interdependent fields of health informatics, bioinformatics, statistics, and data science; expandable, to accommodate new data types and analytic methods; and scalable, to support efficient and methodologically rigorous multisite/institution research. These defining traits allow us to elucidate novel methods and operational principles, harmonize datasets, and create pipelines for data sharing and analytics.



Where Are We Going?

**Any other announcements
of upcoming work, events,
deadlines, etc?**





Three Stages of The Journey

Where Have We Been?

Where Are We Now?

Where Are We Going?





June 18: Application of LLMs in RWE Generation



Yilu Fang

PhD Student, Columbia University



João Almeida

Assistant Professor, Chief Information Security Officer,
University of Aveiro



Martijn Schuemie

Research Fellow, Epidemiology Analytics, Janssen Research and
Development



The weekly OHDSI community call is held every Tuesday at 11 am ET.

Everybody is invited!

Links are sent out weekly and available at:
ohdsi.org/community-calls