

European OMOP Initiatives

Sarah Seager
Senior Director, Analytics and AI - OMOP and PPG Solutions

European Adoption of OMOP



Development of European Networks

End of OMOP Experiment

Main findings in OMOP experiment

- Heterogeneity in estimates due to choice of database
- Heterogeneity in estimates due to analysis choices
- Except little heterogeneity due to outcome definitions
- Good performance (AUC > 0.7) in distinguishing positive from negative controls for optimal methods when stratifying by outcome and restricting to powered test cases
- Self controlled methods perform best for all outcomes

2013

First OHDSI Symposium/Network Study Published

2015

European Chapter



FDA Adoption

2017



EUROPEAN MEDICINES AGENCY
SCIENCE MEDICINES HEALTH

EMA Adoption

First Study

2019

EMA DARWIN
DARWIN
EU
Four Studies

2022

2009

2014

2018

2020/2021

2023

OMOP Experiment #1

OMOP Experiment 1 (2009-2010)

- 10 data sources
- Claims and EHRs
- 200M+ lines

OMOP Methods Library

- Open source
- Standards-based

Common Data Model

- 14 methods
- Epidemiology designs
- Statistical approaches adapted for longitudinal data

Launch of OHDSI



EHDEN Initiation (Europe)



European OHDSI Symposium

OHDSI COVID-19 Study-a-Thon

EU-Chapters



Standard





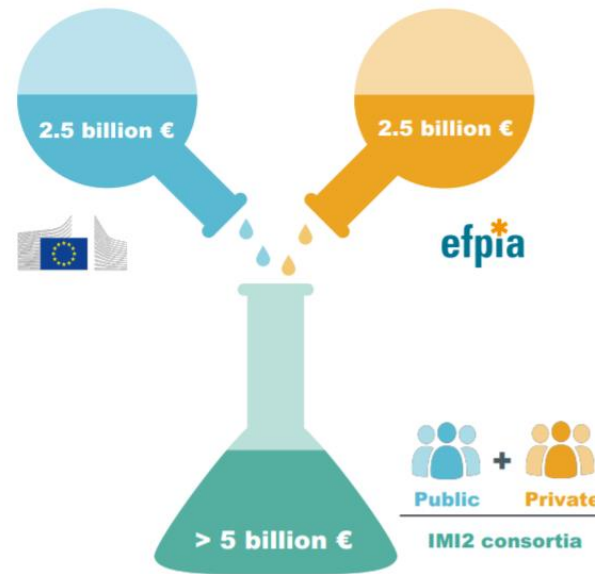
Innovative Medicines Initiative

Vision

The European Health Data & Evidence Network (EH DEN) aspires to be the trusted observational research ecosystem to enable better health decisions, outcomes and care

Mission

Our mission is to provide a new paradigm for the discover and analysis of health data in Europe, by building a large-scale, federated network of data sources standardized to a common data model



IMI 1 (2008-2014)
2 bn € budget
59 projects

IMI 2 (2014-2024)
3.3 bn € budget
More ambitious, more open & greater scope

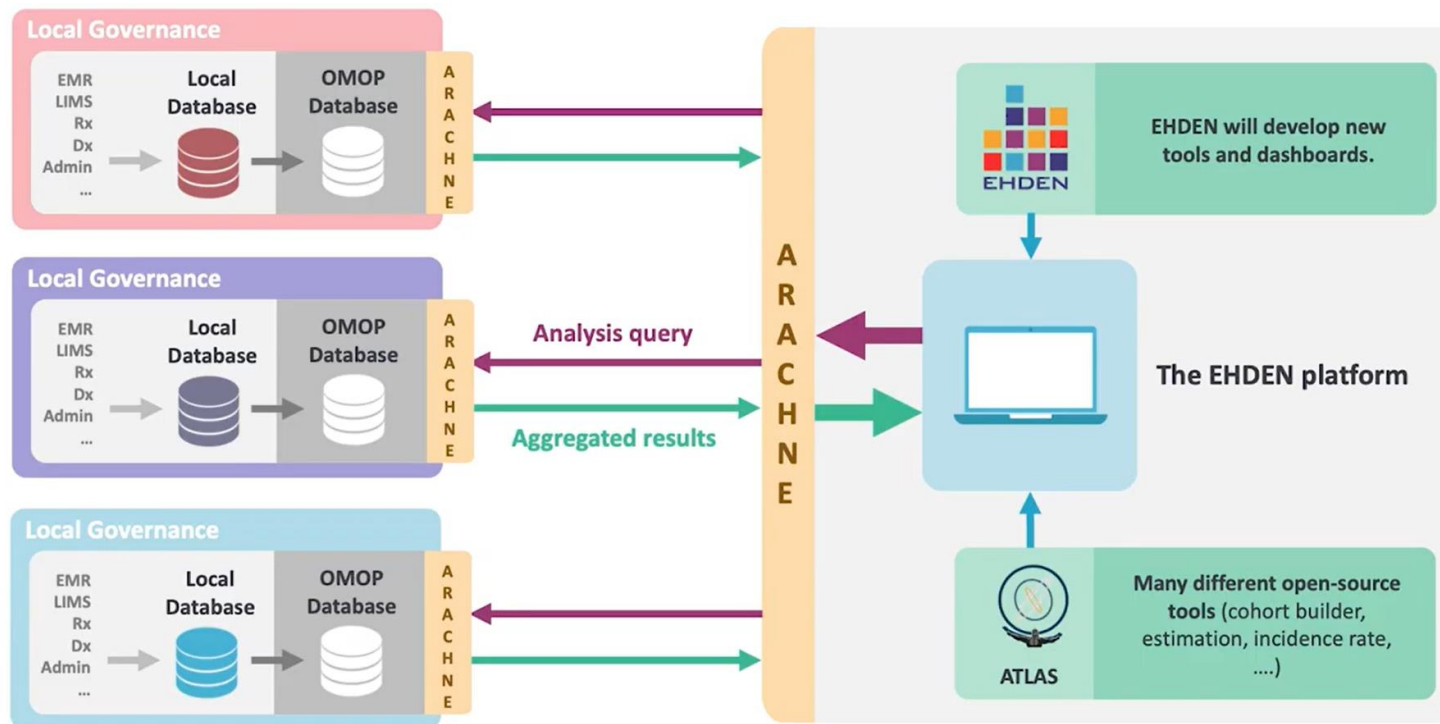


EHDEN Project Facts

Start date: 1st Nov 2018
End date: 30th Apr 2024
Total duration: 66 months
Total budget: 28,917,357€
IMI2 Funding: 14,105,750€
EFPIA contribution: 14,811,607€
=> 187 institutions have joined the network

EHDEN Network

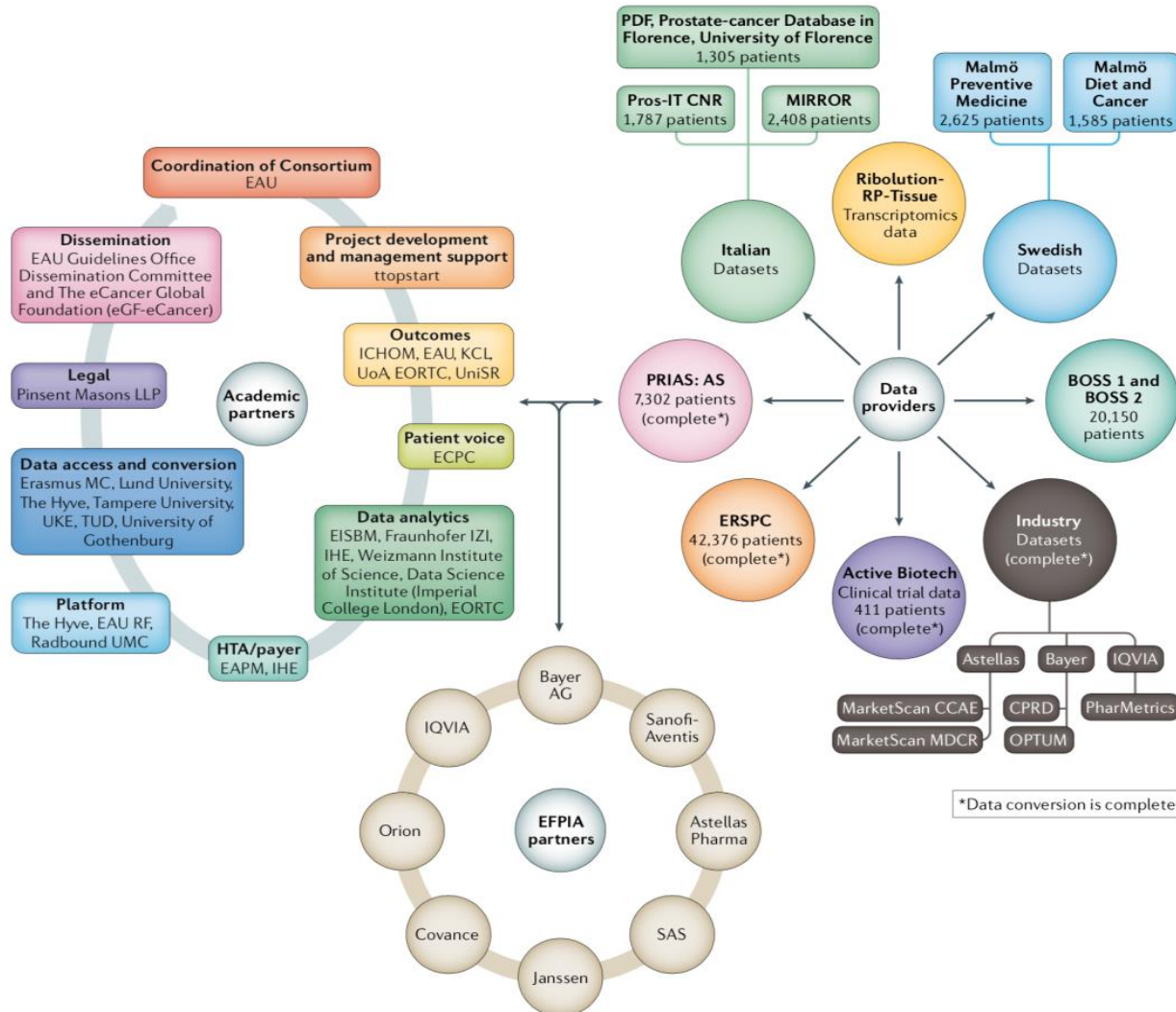
EHDEN is an important data node in the OMOP collaboration



- **EHDEN** represents the OMOP community in **Europe** and is beginning to run studies which can also be **industry-sponsored studies**
- The network today has over **187 data partners** from **29 different countries in Europe**
- Some of the data partners have already completed **data conversion to OMOP**, which makes the EHDEN network a good partner for conducting studies

PIONEER

Part of the Innovative Medicine Initiative's (IMI's) "Big Data for Better Outcomes" (BD4BO) umbrella programme

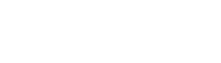


PIONEER is:

- ⊗ A network of **32 public and private stakeholders** across **9 countries**
- ⊗ who collaborate closely with internal and external **data providers**
- ⊗ to build a prostate cancer **Big Data platform.**

Omar et al., Nat. Rev. Urology, 2020. Jun;17(6):351-361.
<https://doi.org/10.1038/s41585-020-0324-x>

PIONEER Consortium



Validation through EMA

Consistency between source and CDM data

> Clin Pharmacol Ther. 2020 Apr;107(4):915-925. doi: 10.1002/cpt.1785. Epub 2020 Mar 2.

Can We Rely on Results From IQVIA Medical Research Data UK Converted to the Observational Medical Outcome Partnership Common Data Model?: A Validation Study Based on Prescribing Codeine in Children

Gianmario Candore ¹, Karin Hedenmalm ¹, Jim Slattery ², Alison Cave ², Xavier Kurz ², Peter Arlett ²

Affiliations – collapse

Affiliations

- 1 Business Data Department, European Medicines Agency, Amsterdam, The Netherlands.
- 2 Pharmacovigilance and Epidemiology Department, European Medicines Agency, Amsterdam, The Netherlands.

PMID: 31956997 DOI: 10.1002/cpt.1785

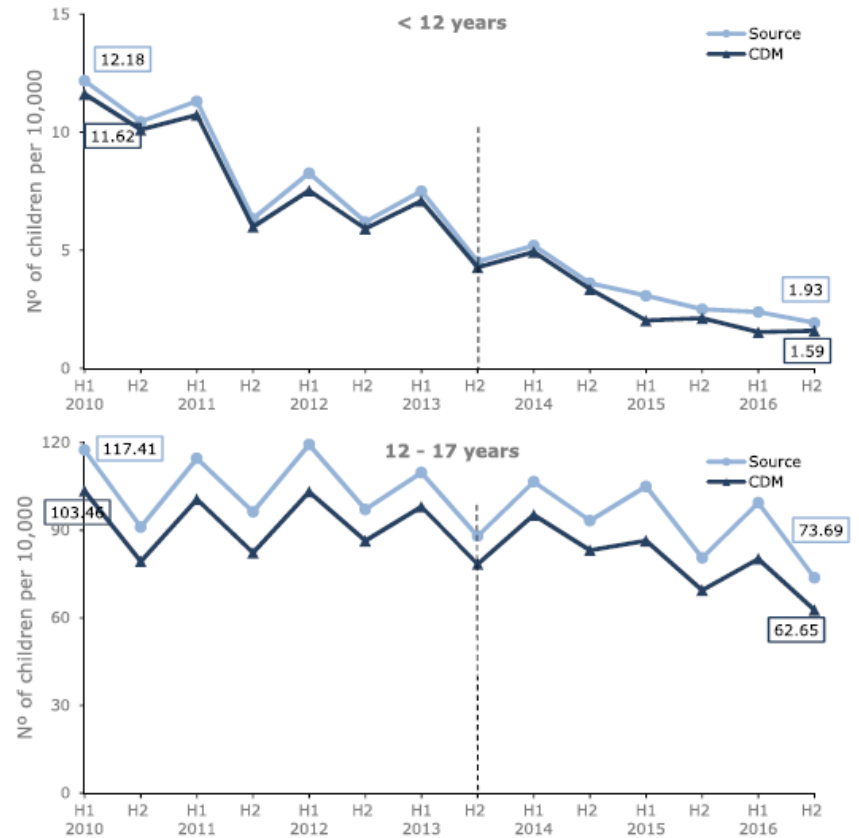


Figure 1-2: Six-monthly prevalence (per 10,000) of codeine prescribing for pain in 0–17 years

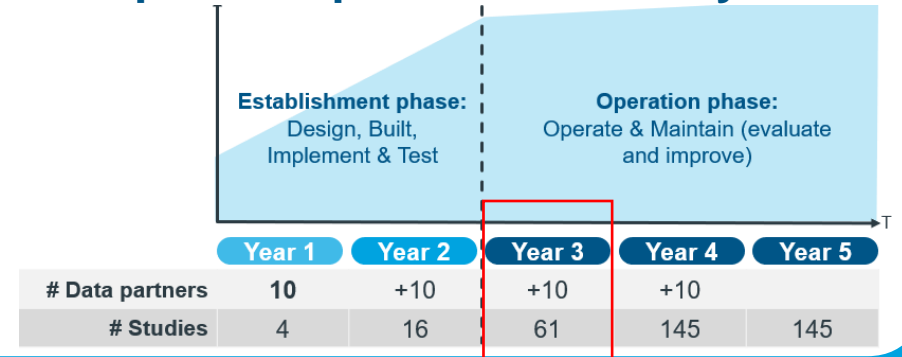
The Data Analysis and Real World Interrogation Network (DARWIN EU)

Providing timely and reliable evidence on the use, safety and effectiveness of medicines for human use, including vaccines, from real world healthcare databases across the EU

Overview of DARWIN EU Timelines

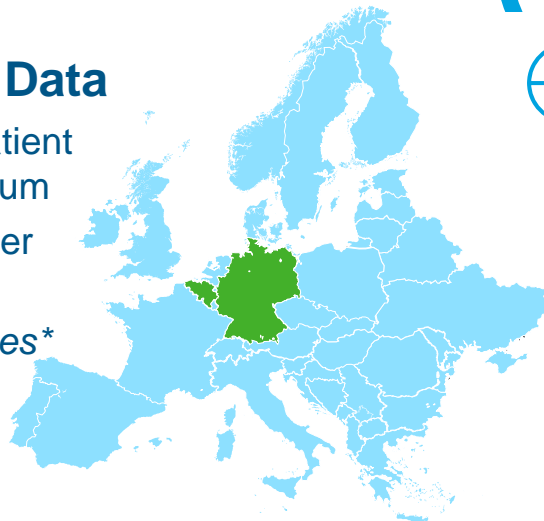
- 2021: Project initiation
- 2022: DARWIN EU establishment
- 2023: Developing and using DARWIN EU
- 2024: Full operation mode
- 2025: Leverage the EU Health Data Space

Expected operations over 5 years



IQVIA Sources of Data

- IQVIA Longitudinal Patient Database (LPD) Belgium
- IQVIA Disease Analyser (DA) Germany
- *Other OMOP databases**



Scientific Questions

- Prevalence of Rare Blood Cancers in EU
- Drug Utilisation of valproate-containing products
- Severe Asthma
- Drug utilisation in patients with depression
- Monitoring prescription of medicines for public health emergencies at risk of shortages

IQVIA helped create DIGICORE in 2020, an international public private partnership to transform **and digitise** precision oncology outcomes research

Members

Academic cancer centres



Individual cancer centers

Industry



DIGital Institute for Cancer Outcomes Research (DIGICORE)

Pan-EU research collaboration to study cancer outcomes, capitalizing on increase in precision oncology

**Independent European Economic Interest Group (like OEI) with 40 cancer centres today in 17 countries
Founded in 2020**

Benefits and rationale

- For **Cancer Centres**, interoperability of cancer data across sites for improved, lower cost translational research
- For **Patients**, broader trial access and in future better outcomes
- For **Industrial Partners**: drive commercial multi – centre, international RWE projects in precision oncology and drive precision trial recruitment
- **Grow clinical evidence base for molecular diagnostic tests** in improving outcomes and accelerate test reimbursement for all vendors

DIGICORE launches Digital Oncology Network for Europe (DIGIONE)

Scalable federated approach to digital cancer care quality management – 6 centre pilot



1. Define a **scalable common international minimum dataset for precision oncology**, building from French OSIRIS dataset
2. Achieve **interoperability and high data quality** on that dataset between 6 centres across Europe under GDPR using Cancer OMOP
3. Establish a **federated network between those centres** to allow complex statistics such as risk adjusted Kaplan Meier curves, with appropriate information governance and contracting
4. Work out how to **scale up digitally less mature hospitals** with a **variety of technologies and vendors** in DIGICORE's learning-by-doing community

16 sites applied → 6 centres (with leading KOLs) won

- Frankfurt (Janne Vehreschild)
- Leeds (Geoff Hall)
- Maastricht (Andre Dekker)
- Oslo (Åslaug Helland)
- St Luc (Cédric Van Marcke)
- San Raffaele (Giovanni Tonon)

Key takeaways

Thank you for your attendance

01

EHDEN a large-scale, federated network of data sources standardized to a common data model and trusted observational research ecosystem

02

PIONEER a central and federated state-of-the-art Big Data analytic platform for prostate cancer

03

DARWIN a real-world evidence from across Europe on diseases, populations and the uses and performance of medicines

04

Digicore a pan-EU research collaboration to study cancer outcomes, capitalizing on increase in precision oncology



Thank you!

sarah.seager@iqvia.com